

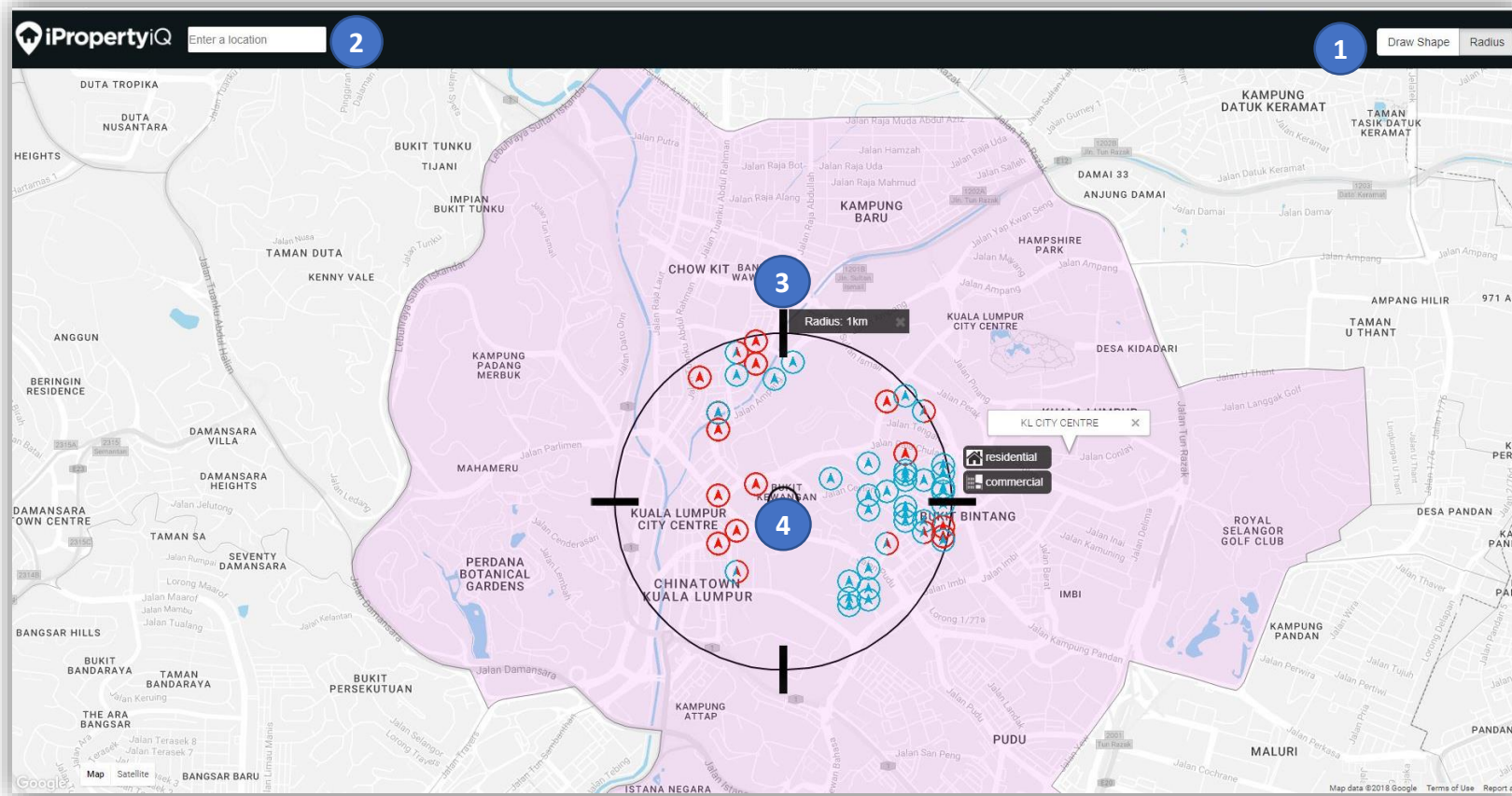
iPropertyIQ New Features

May 2018

New features updated

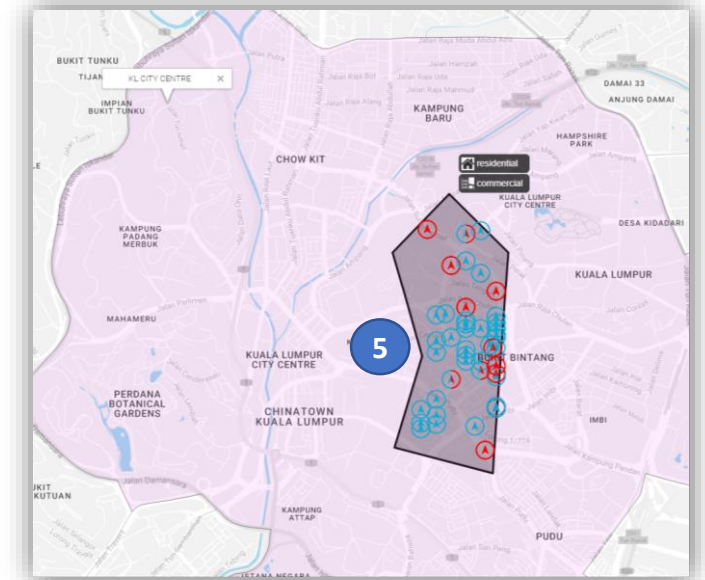
- 1. New tool! Map analysis lived!** Map Select allows user to precisely analyze projects and buildings within the selected boundary.
- 2. New Data! Real buyer profile.** Based on actual buyer name from JPPH data, this new data provides the ability to analyse actual buyers of properties. Covers sub-sale and new.
- 3. New Data! Primary transacted.** Data from JPPH. Covers all building types. Covers only KL, Selangor and Johor for now. JPPH data updated since 2016(based on new sales with stamp duty paid). Expect lag of data for strata title properties.

1. Map Select



Map Select allows user to precisely to only analyze projects and buildings within the selected boundary. Features include:

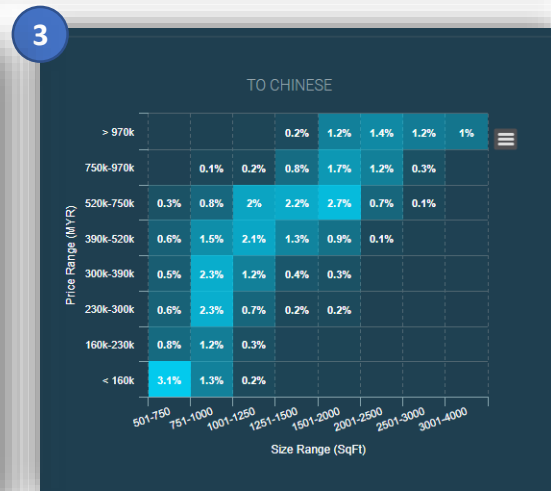
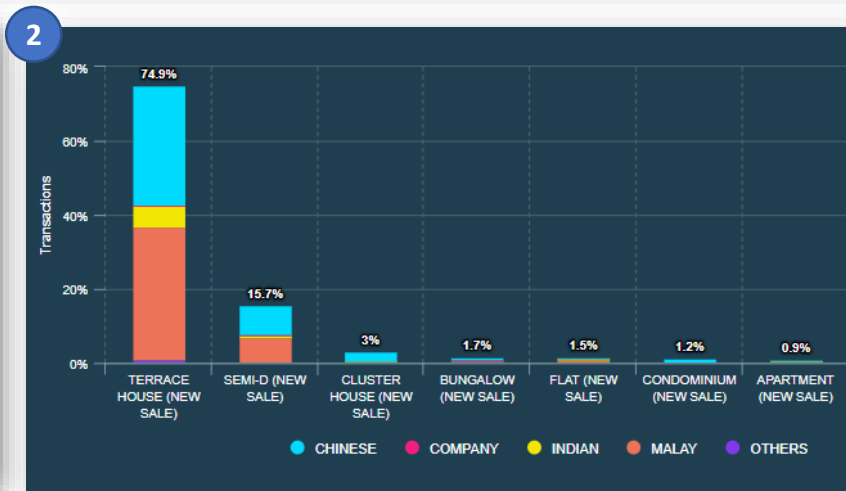
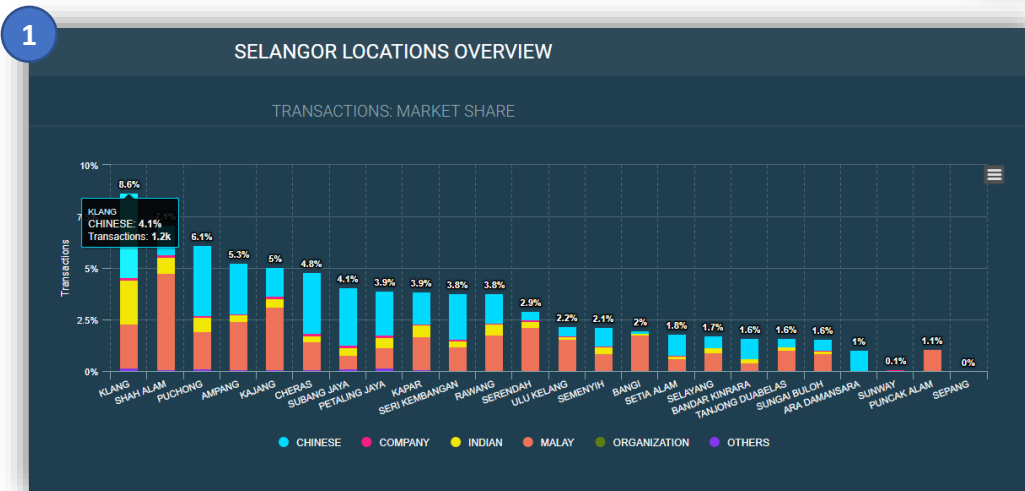
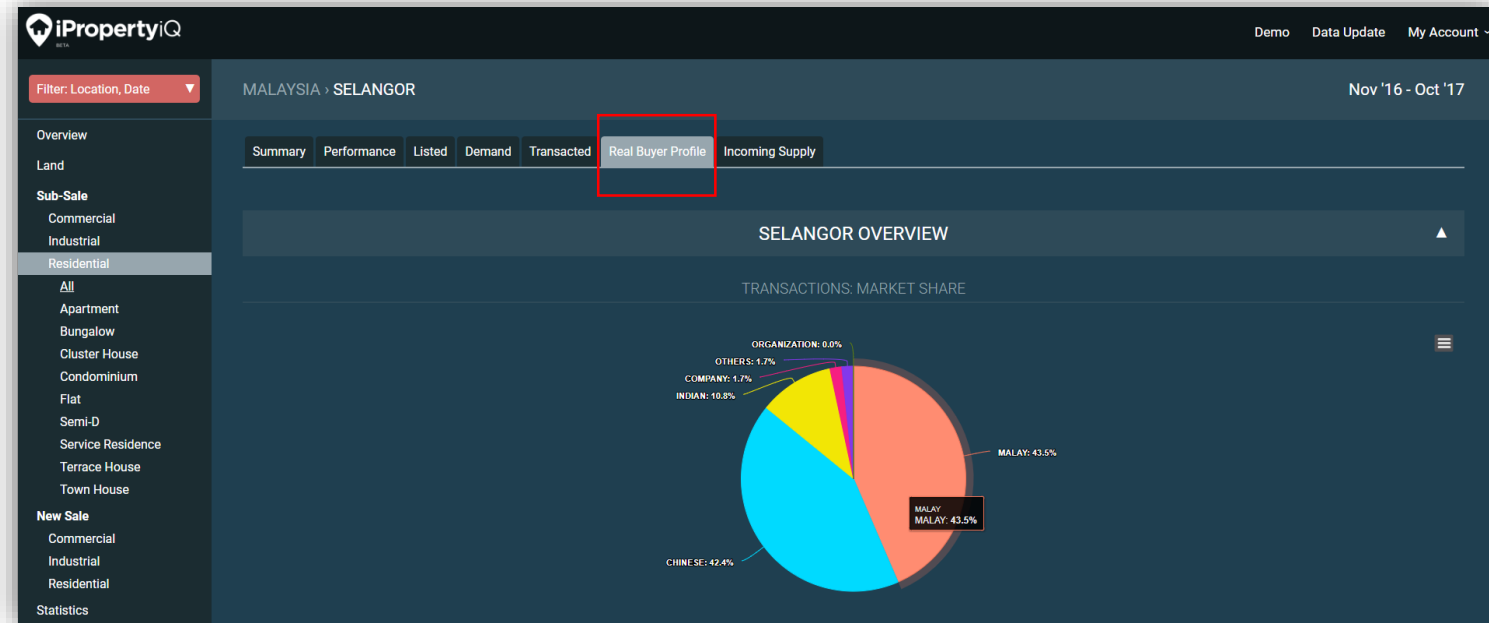
1. target a radius or draw a custom area
2. search a location,
3. select different radius,
4. drag to relocate the center point
5. custom draw a strategic shape boundary to the user needs.



2. Real Buyer Profile

Buyer profile by personal purchases by ethnicity, business, organization (associations, trust funds, etc) and others (cannot be defined) market share profile. Indicators include:

1. by location
2. by building types
3. by size range & price range (heat map)



3. New Sale / Primary transacted data

New section for primary data. Analysis similar to sub-sale minus volume charts (due to lag in receiving the data). Includes real buyer profile for new sales.

